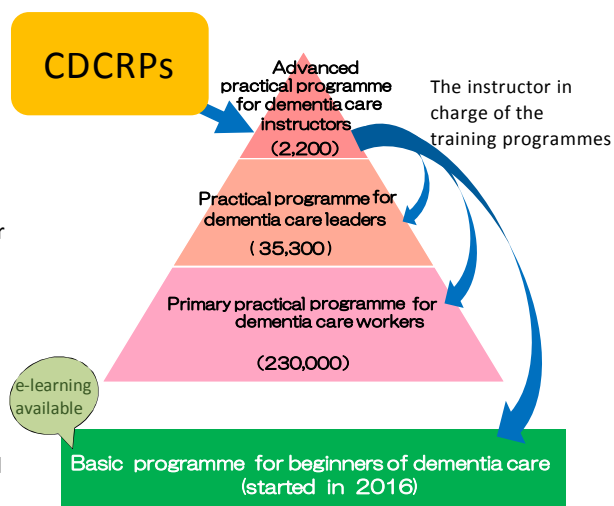


# Contribution of the Centers for Dementia Care Research and Practices to Training of Dementia Care Workers

## Structure of National Training Project for Dementia Care Workers

The National Training Project for Dementia Care Workers consists of three stepwise programmes: 1. the primary practical training for dementia care workers, 2. the practical training for dementia care leaders, 3. the advanced practical training for dementia care instructors.

The primary training programme for dementia care workers consists of 38.5 hours of lectures and seminars, and 4 week workplace trainings. Since 2000, about 230,000 care workers have been completed this course. The next one is the practical training for dementia care leaders consisting of 56 hours of lectures and seminars and 4 week workplace trainings and about 35,300 leaders were developed. Those two programmes are conducted by the local governments in all prefectures of Japan, and carried out by the dementia care instructors described next. The advanced practical training for dementia care instructors who are expected to work as professionals not only in their workplaces but widely in their regions is provided by CDCRPs. The course is exclusively professional and concentrated, and consists of 313 hours of lectures and seminars and 4 weeks of the workplace training. There are about 2,200 instructors. Thus, CDCRPs directly and indirectly supply expert dementia care workers in Japan.



In addition, the one day basic training programme consisting of lectures and seminars for very beginners of dementia care was introduced in 2016. Part of the programme can be studied with an e-learning. This programme is also conducted by the dementia care instructors



## Activities of the Dementia Care Instructors

We asked the dementia care instructors about their activities in 2015 using in a Web questionnaire. 88.3% of them answered to participate in some activities concerning dementia care. 94.4% of the “active” respondents worked as an instructor, a lecturer and/or a planner for dementia care practical training. Fig.2 shows some of their activities.

Most of them were engaged in educational activities. Many of them also participated in cooperative activities with Community General Support Centres and Dementia Support Doctors. Some of them were members of state or local governmental committees concerning dementia care.

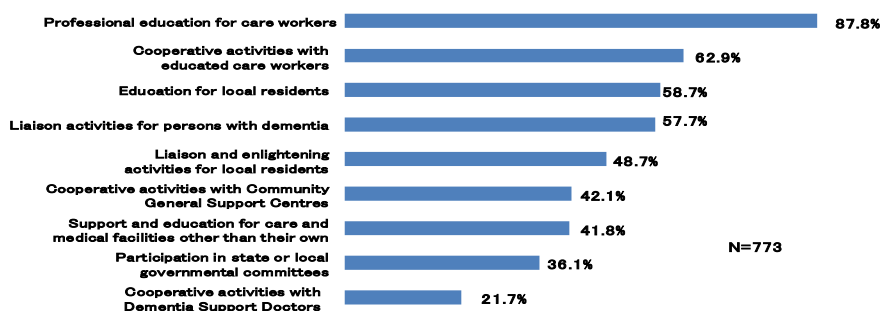


Fig.2 Activities of the dementia care instructors